

# ILD-3xx Camera Web Interface User Guide



## Contents

1. Overview .....	3
2. Live .....	5
3. Playback .....	6
3.1. Search and playback .....	6
3.2. Recording images and video export .....	8
4. Settings .....	9
4.1. System / Device .....	9
4.2. System / Network.....	10
4.3. System / Users .....	10
4.4. System / Time.....	11
4.5. System / Storage .....	12
4.6. System / Active connections.....	12
4.7. Video / Image settings .....	13
4.8. Video /Video encoder .....	14
4.9. Video / Motion detector.....	16
4.10. Video / EPTZ .....	17
4.11. Events / Detector list.....	18
4.12. Events / Alarm events.....	19

---

## 1. Overview

Intellio ILD cameras have a dedicated web interface which grants access to the camera settings, the live video and – in case of ILD-310S-MVD-IR type cameras – a “Playback” section to play back footage from the SD card. The web interface comes especially handy when installing the camera, since the required image quality can be adjusted through connecting the camera to a laptop.

All we need to be able to use the web interface of Intellio ILD cameras is an internet browser.

Supported browsers:

- Internet Explorer 8 or newer,
- Mozilla Firefox 6 or newer,
- Google Chrome 15 or newer.

In case there is no JAVA application installed on the target computer, the browser sends a notification about it along with a download link.

If the JAVA software is already installed, go on to authorize its use in the browser.

The interface can be accessed in the following way:

1. In the URL field of the browser, type in the IP address of the camera.
2. Provide the user name and password on the login interface (default: admin/admin).
3. After login the web interface of the camera appears and the required settings can be done.



The image shows a login form titled "Intellio camera login". It contains two input fields: "User:" with the text "admin" and "Password:" with six dots. Below the fields is a "Login" button.

For more information on the IP address of the camera, please visit [wiki.intellio.hu](http://wiki.intellio.hu).

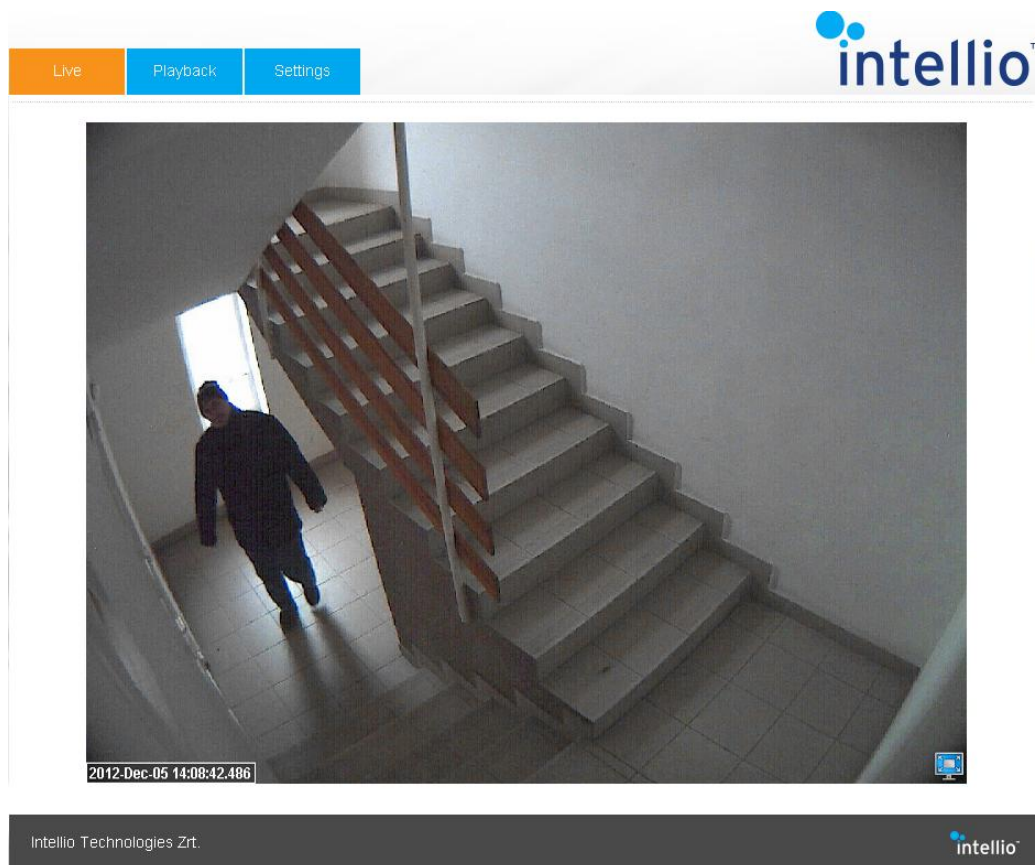
---

The following menu is available for camera settings:

1. Live  
The live images of the camera can be viewed.
2. Playback  
The footage stored on the SD card can be played back.
3. Settings
  - a) **System:** the device, network, user and memory card storage settings can be accessed, and the active connections can be viewed.
  - b) **Video:** the settings of the live images and video encoders, along with the EPTZ functions can be accessed.
  - c) **Events: the detectors on-board the camera and the events detected by them can be viewed.**

## 2. Live

After login the live video of the camera can be seen under the Live tab.



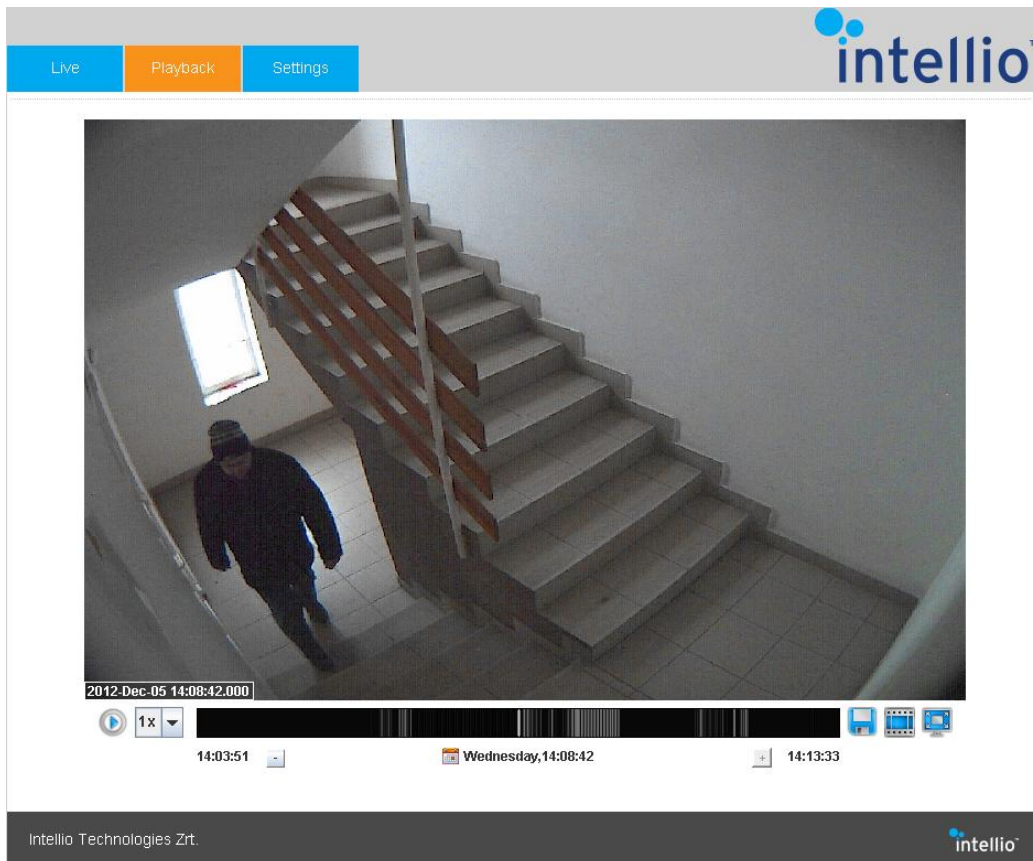
This tab displays only the live images of the camera, which can be enlarged to full screen using the icon in the bottom right corner of the image.

Press the same icon or the ESC key to exit full screen mode.

---

### 3. Playback

The Playback tab provides the interface for searching and playing back the footage stored on the memory card. If necessary, video extracts can be saved onto your computer.



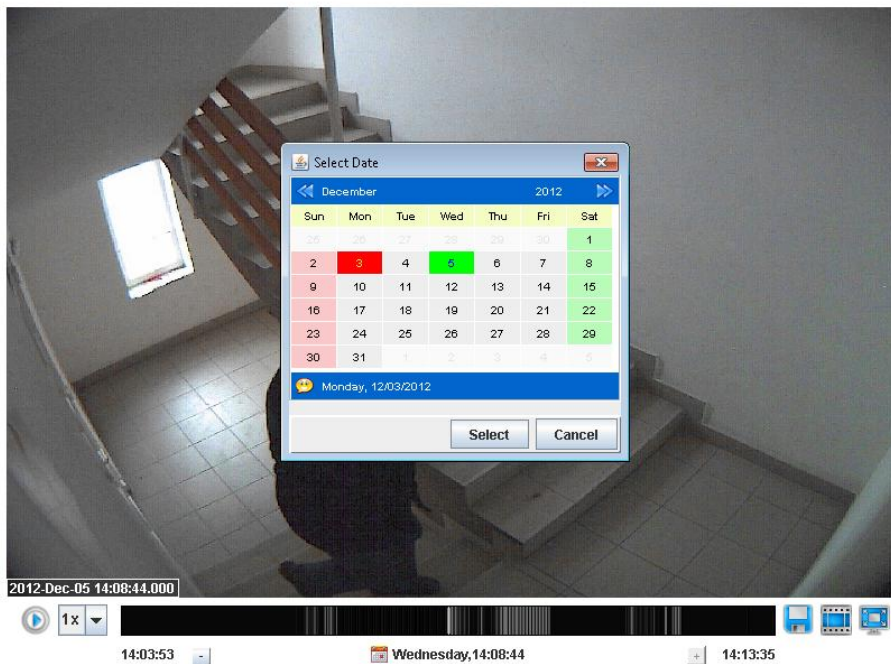
#### 3.1. Search and playback

The timeline and the calendar allow for searching the footage. The timeline is the black/grey bar below the camera image. The grey marks indicate the events that had occurred. Press the left or right mouse button over the timeline to navigate backwards (left) and forward (right) in time.



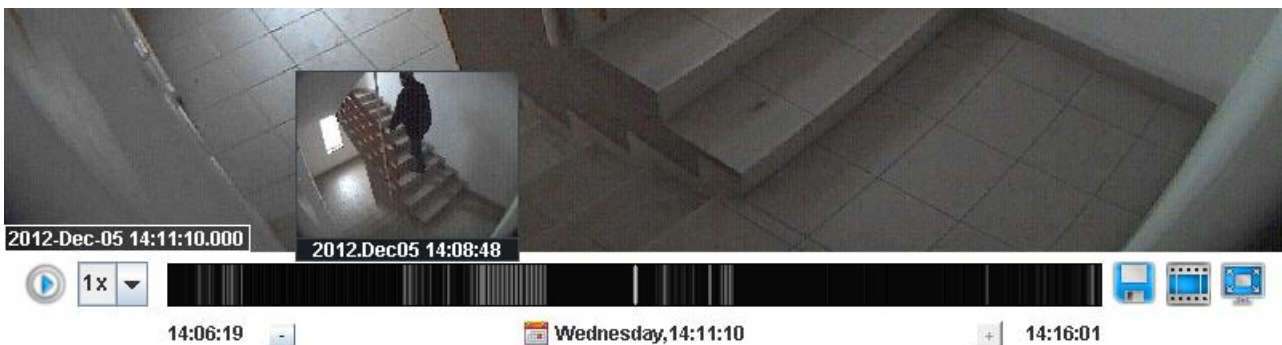
The minus and plus symbols below the timeline serve to shrink or extend the time period in the timeline. Alternatively, roll the mouse scroll wheel over the timeline for the same effect.

There is a white, vertical mark in the middle of the timeline, which shows the progress of the playback and the current time belonging to the displayed image during the playback.



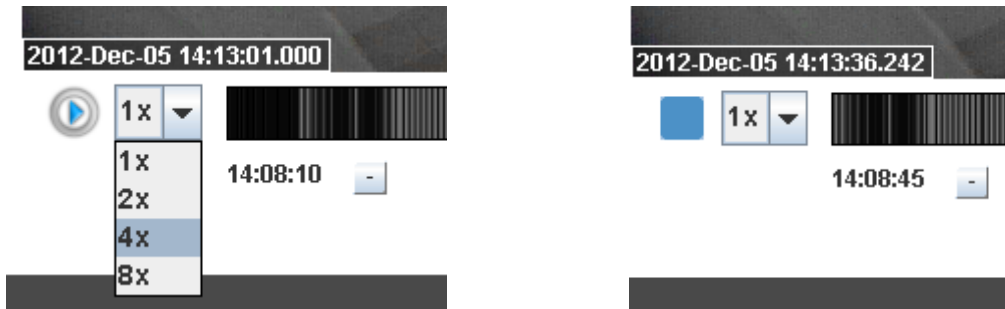
Clicking this time mark will pull up a calendar, where the month and day can be selected for playback. Press the Select button to display the events of the selected day on the timeline. You can navigate the timeline as described above.

Finding a particular event is also aided by a thumbnail image appearing when the cursor is placed over the timeline.



In case of a time parameter with no corresponding footage, the caption "No data" is displayed.

After setting the time of the playback the usual functions are available. The playback button and the pull-down menu for setting the playback speed are on the left of the timeline. The Stop button is displayed during ongoing playback.



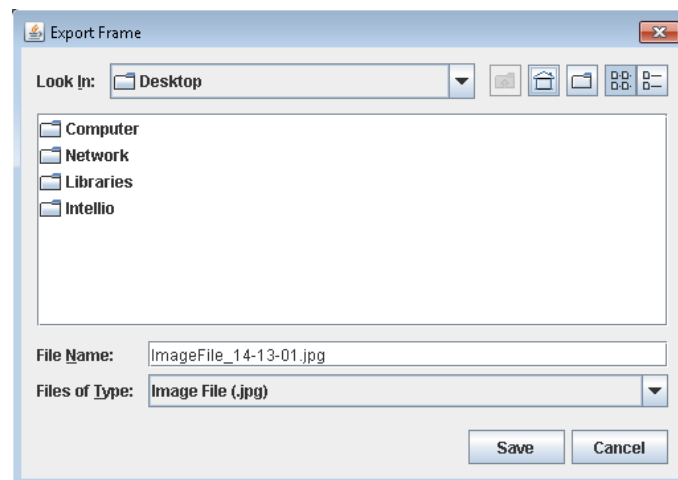
The wide screen mode can be used here. The icon of the wide screen view is in the bottom right corner.

### 3.2. Recording images and video export

The important extracts – still images or video - can be saved onto the computer. The icons for saving images and video export can be found on the right of the timeline.



Click on the floppy disk icon to pull up the video export window and provide the name and target destination of the file to be saved. The image being displayed is the one that will be stored (in JPEG format).

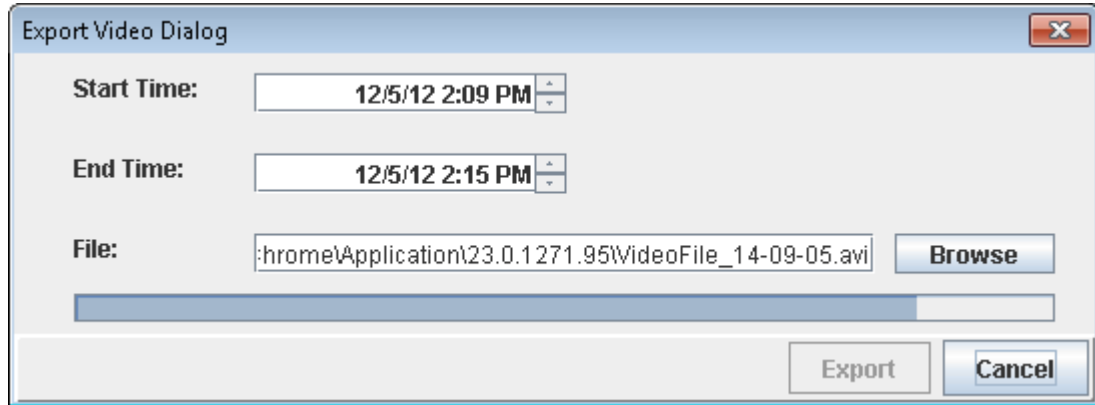


Click on the film reel to export videos. Press the left mouse button over the timeline to select the beginning and the end of the footage to be exported. The selection will be marked by a semi transparent grey section, within which the length of the video is displayed.



Once the selection has been made, the video export window pops up allowing users to narrow down the beginning and the end of the time selection (month:day:year hour:minute, AM or PM).





Click "Browse" to select the destination directory, and type in a name for the AVI video to be saved.

Exporting – depending on the length of the video – may take a few minutes. The progress of the exporting can be monitored on the progress bar displayed after pressing the Export button.

To view the exported video you need to install the Intellio Video Codec. This allows the footage to be played on Windows Media Player.

## 4. Settings

The parameters necessary for the optimal operation of the camera can be set under the Settings menu.

### 4.1. System / Device

The Device data sheet contains the key data of the camera, which are the following:

- MAC address: the MAC address of the camera,
- Product name: camera type,
- Firmware build: serial number of camera firmware,
- Alarm manager (available, not available): the status of the alarm manager
- I/O manager: the status of the I/O manager,
  
- Name: camera name (modifiable),
- Description: description (modifiable),

General
MAC: 00-19-b4-01-5b-56
Product name: ILD-310E-MVD-IR
Firmware build: DEVELOPMENT VERSION v1.40.0 (build 345)
Alarm manager: available
IO manager: available

Name & Description
Name: Lepcsohaz
Description: Intellio security camera

[Change settings](#)

Click the Change settings button to modify the data which are modifiable.

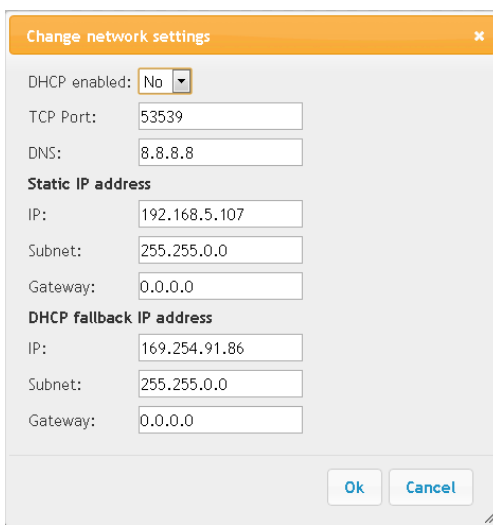
### Upgrade Firmware

You can find the upgrade of the firmware under the Device menu. Click on the Upload firmware button then choose the .rce file to upload. Click the OK.

It can take few minutes until the file is uploaded, you will get a pop-up message about the finishing.

Now the camera will restart and is ready to operate with the new firmware 1-2 minutes later. During this time the power supply of the camera must not be interrupted.

## 4.2. System / Network



The **Network** menu contains the network settings. Either a static or dynamic IP address can be set for the camera.

Default DNS: 8.8.8.8

## 4.3. System / Users

The **Users** menu serves for the maintenance of user data. The default user is the admin.

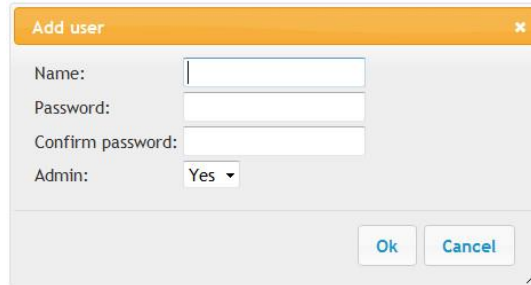
User name	Admin	Modify	
admin	yes	Delete	Modify

Add user

- Add user: for adding a new user.
- Delete: deleting a user.
- Modify: modifying user data.

One of two permission levels can be set when adding a new user:

Admin: Yes      assigning admin permissions to the user.  
 Admin: No      the user is only authorized to access the Live and Playback functions, but cannot modify the camera settings.



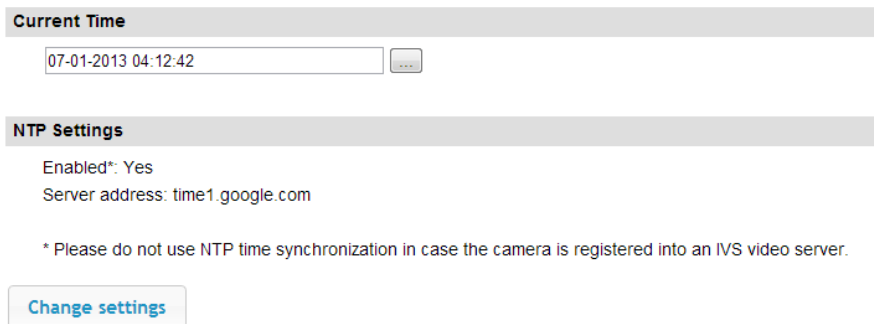
The 'Add user' dialog box contains the following fields:

- Name:
- Password:
- Confirm password:
- Admin: Yes

Buttons:

## 4.4. System / Time

This menu is for setting the camera time.



**Current Time**

**NTP Settings**

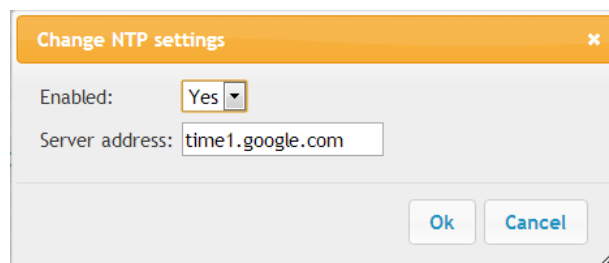
Enabled\*: Yes  
Server address: time1.google.com

\* Please do not use NTP time synchronization in case the camera is registered into an IVS video server.

Below the caption "Current Time" the current time of the camera is displayed (day-month-year hour:minute:second).

Click on the icon on the right () to manually adjust the date and the clock.

In addition, the NTP server can be used. Press "Change settings" to pull up the window where the NTP server can be authorized or prohibited.



The 'Change NTP settings' dialog box contains the following fields:

- Enabled: Yes
- Server address:

Buttons:

**Use this option only in case the camera is not registered on an Intellio server.**

See default values below:

Enabled: No  
Server address: time1.google.com

## 4.5. System / Storage

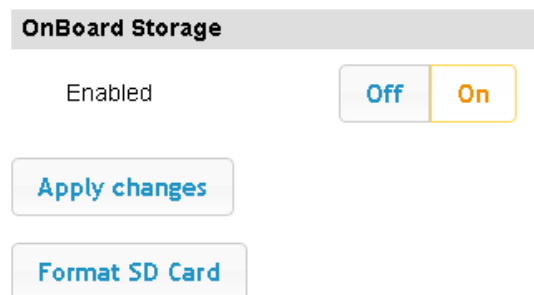
Recording to a memory card and formatting the SD card can be authorized or prohibited via this interface (in case of cameras that support this function).

### **Switching on/off storage:**

- Off – no storage onto SD card
- On – all images to be sent to the server are stored on the SD card.

To activate the settings click "Apply changes".

Please note that a recording is only made if the Codec is set to IVC! This setting can be checked in the Video/Video encoder menu.



### **Formatting the SD card:**

The SD card can be formatted by pressing the "Format storage device" button.

After pressing the button, users are prompted to confirm whether they want to format the card; alternatively, they can abort the formatting.

If clicking the YES button, formatting will start causing the camera to be offline for a few minutes, then to reboot.

**Caution: Formatting will erase all data from the SD card!**

## 4.6. System / Active connections

This menu allows users to check which cameras are monitored from which IP addresses, and which servers the cameras are registered to. In addition, this menu provides data concerning image transmission.

---

IP	Buffered count	Buffered size [byte]	Bandwidth [kbps]	Total sent	Total dropped	Uptime
192.168.5.1	0	0	0	1104	0	0:01:26:37
192.168.5.1	0	0	0	1038	0	0:01:26:36
192.168.5.1	0	0	656	15135	0	0:01:26:36

Refresh

Interpreting the columns of the table:

**IP** – the IP address of the server creating the connection to the camera

**Buffered count** – number of packages in the buffer

**Buffered size** – the amount of data currently in the buffer (expressed in bytes)

**Total sent** – the number of packages sent while the TCP-connection was active

**Total dropped** – the number of packages dropped while the TCP-connection was active

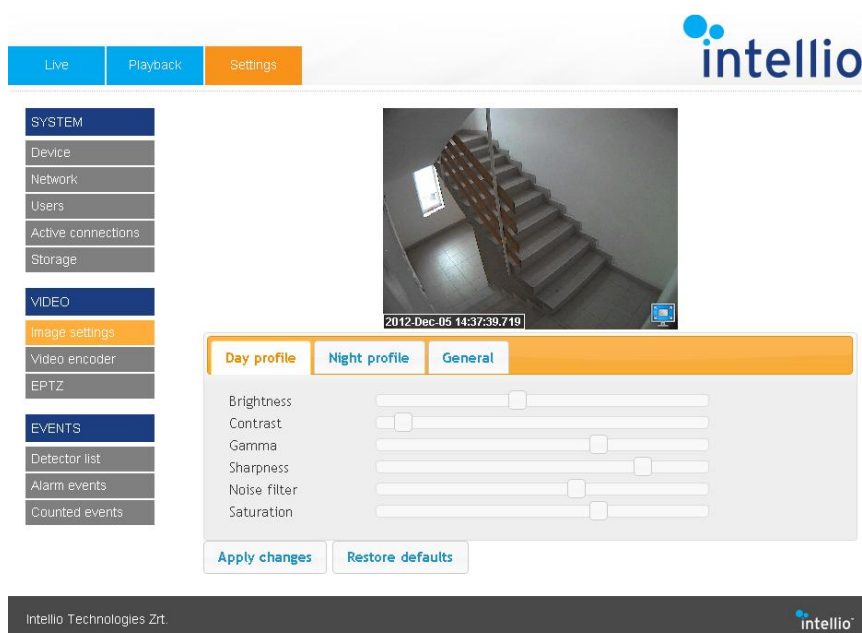
**Uptime** – how long the TCP-connection has been active (day:hour:minute:second)

## 4.7. Video / Image settings

Go to **Image Settings** to access the functions pertaining to image settings, and to view the live video.

Use the sliders on the settings interface to adjust the image quality. If necessary, enlarge the live video to full screen by clicking on the icon in the bottom right corner of the small screen.

Click the Apply changes button to save the changes.



The **Night profile** settings allow for assigning unique settings to the nighttime mode. These settings are activated when the profile is authorized and the camera switches to nighttime mode. Unless activating the profile, the general settings will be in force for both nighttime and daytime operation.

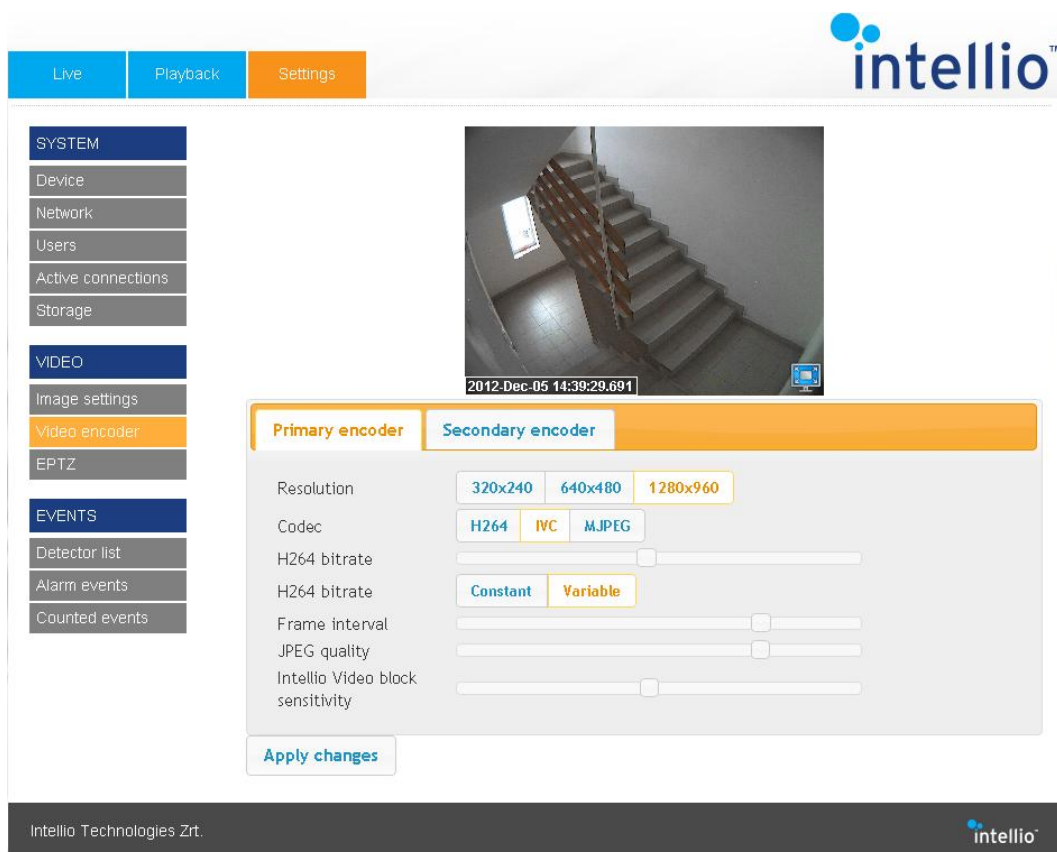
If the camera has infra LED's, their brightness can be adjusted using the **Infra LED level**.

When adjusting **Night gain boost, the analog gain within the sensor can be set from 1x to 2x**.

Click "Restore Default" on the bottom of the page to switch back the settings to default values.

## 4.8. Video /Video encoder

The **Video encoder** menu features the functions related to the video encoder, along with the live video displayed above these functions.



The screenshot displays the Intellio web interface. At the top, there are navigation tabs for 'Live', 'Playback', and 'Settings'. The 'Settings' tab is active. On the left, a sidebar menu lists various system settings under three main categories: SYSTEM (Device, Network, Users, Active connections, Storage), VIDEO (Image settings, Video encoder, EPTZ), and EVENTS (Detector list, Alarm events, Counted events). The 'Video encoder' option is selected and highlighted in orange. The main content area features a live video feed of a staircase with a timestamp '2012-Dec-05 14:39:29.694' and a small camera icon in the bottom right corner. Below the video feed is a settings panel with two tabs: 'Primary encoder' (selected) and 'Secondary encoder'. The settings include: Resolution (320x240, 640x480, 1280x960), Codec (H264, IVC, MJPEG), H264 bitrate (with a slider), H264 bitrate mode (Constant, Variable), Frame interval (with a slider), JPEG quality (with a slider), and Intellio Video block sensitivity (with a slider). An 'Apply changes' button is located at the bottom of the settings panel. The footer of the page shows 'Intellio Technologies Zrt.' and the Intellio logo.

The Primary encoder settings allow for selecting the resolution and the codecs. The image resolution may vary depending on camera type, but the encoders are always the ones listed below:

- H264,
- IVC,
- MJPEG.

In case of the H264 encoder, viewing the live video may require downloading further components, which is indicated by the web browser.

After selecting the encoder some further settings options about the codecs are listed.

To activate the new settings click "**Apply changes**".

The Secondary encoder settings can be switched on and off by selecting "Enabled Yes/No".

The settings can be used in the same way as with primary encoders.

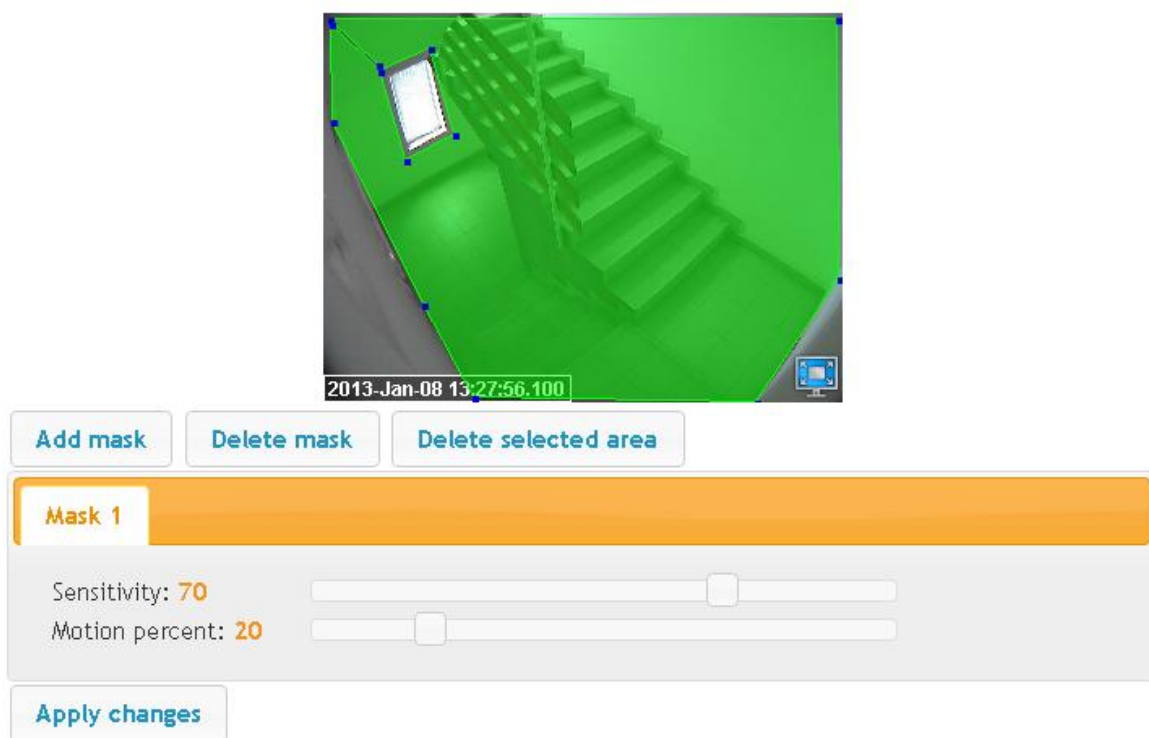
---

## 4.9. Video / Motion detector

Setting the motion detector is a crucial step with regards to storage efficiency and the flawless recording of events.

The motion detectors controlling image transmission are on-board the camera.

Cover the relevant area with the green polygon mask. Multiple masks can be combined to make up Mask 1. Make sure to activate the new settings by clicking **"Apply changes"**.



- Adjust the Sensitivity. The Sensitivity will apply to the masked areas. Decreasing the value will decrease the sensitivity of motion detection, while increasing the value will increase the sensitivity.
- Adjust the Motion percent. The Sensitivity will apply to the masked areas. Decreasing the value will decrease the degree of the motion which will be detected, while increasing the value will increase the degree of the motion.

Click "Add mask" to create as many masks as needed. You can create multiple masks to allow for a variety of sensitivities and motion percents.

Click "Delete mask" to delete the entire mask, and click the "Delete selected area" button to delete the selected green polygon within the mask.

---



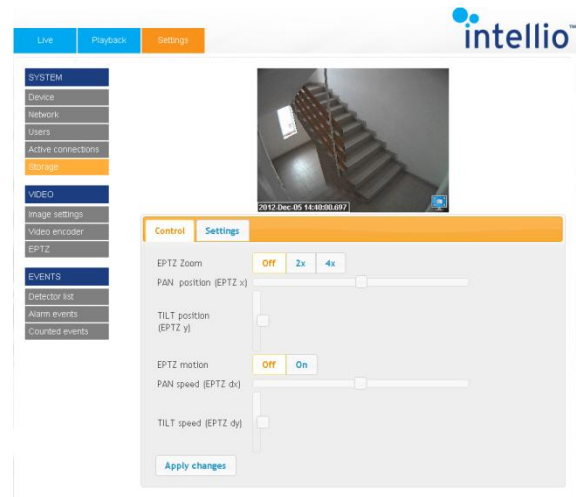
## 4.10. Video / EPTZ

By using the EPTZ function the PTZ function can be used on the live video.

### **Zoom function:**

Turn on the EPTZoom by pressing the ON button, then press the Apply changes button. Next, the horizontal and vertical positions can be adjusted on the video:

- Pan position (EPTZ x),
- TILT position ( EPTZ y ),



Make sure to click **“Apply changes”** after modifying each position to zoom in on the area in the live video which has been set on the axes.

### **Panning and tilting:**

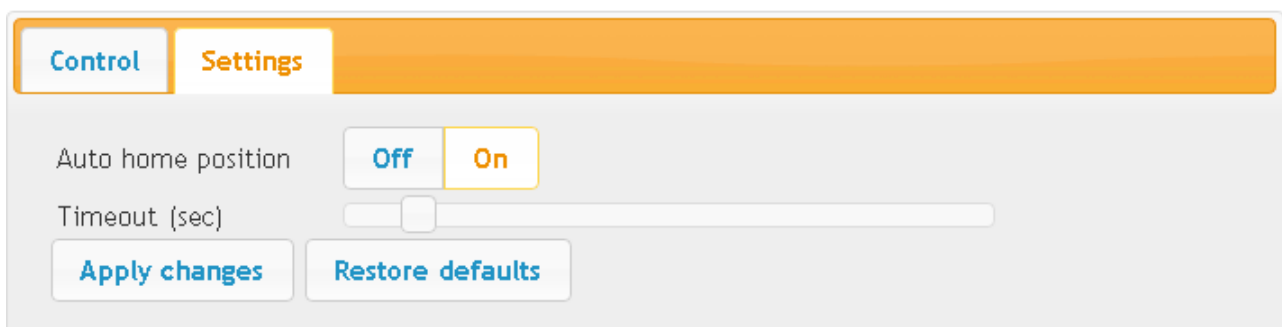
Switch EPTZ motion to ON to pan and tilt the image at the set speed.

Panning and tilting is only possible when the zoom is on, and vice versa: the image cannot be zoomed out if the motion is active.

### **Automatic switch-off of EPTZ**

Go to the Settings tab on the EPTZ menu to see the Auto home position settings.

This function – when switched on – comes handy in unintended situations when the images are inadvertently left zoomed in after using the EPTZ. Once the EPTZ is not used any more, it is switched off automatically after the set time period has elapsed.



- Auto home position: by default, it is switched off. While in the Off position, the EPTZ remains zoomed in for an indefinite period of time.
- Timeout (sec): Select a time interval in the range of 30-300 seconds to define when the EPTZ should return to default position. By default, the timeout interval is set to 60 seconds.

Click **“Apply changes”** to activate the new settings.  
Click **“Restore defaults”** to revert to the default settings.

#### 4.11. Events / Detector list

This is where the list of detectors on-board the camera can be viewed.  
The first column contains the detector name, while the second column shows the detector type.

Name	Class
Rotation detector	AlarmDetectorRotation
Covering detector	AlarmDetectorCover

Calibrate the detectors via the management software.

---

## 4.12. Events / Alarm events

The Alarm events tab can be used for querying the security events stored on the camera. When clicking the tab the last 64 events will be listed.

Date	Detector name	Event code	Type
Thu Dec 06 2012 13:32:45 GMT+0100 (Central Europe Standard Time)	AlarmDetectorMotion	100	detSignal
Thu Dec 06 2012 13:32:49 GMT+0100 (Central Europe Standard Time)	AlarmDetectorMotion	100	detRestore
Thu Dec 06 2012 13:32:49 GMT+0100 (Central Europe Standard Time)	AlarmDetectorMotion	100	detSignal
Thu Dec 06 2012 13:32:52 GMT+0100 (Central Europe Standard Time)	AlarmDetectorMotion	100	detRestore
Thu Dec 06 2012 13:32:52 GMT+0100 (Central Europe Standard Time)	AlarmDetectorMotion	100	detSignal
Thu Dec 06 2012 13:32:55 GMT+0100 (Central Europe Standard Time)	AlarmDetectorMotion	100	detRestore
Thu Dec 06 2012 13:32:55 GMT+0100 (Central Europe Standard Time)	AlarmDetectorMotion	100	detSignal
Thu Dec 06 2012 13:32:58 GMT+0100 (Central Europe Standard Time)	AlarmDetectorMotion	100	detRestore
Thu Dec 06 2012 13:32:58 GMT+0100 (Central Europe Standard Time)	AlarmDetectorMotion	100	detSignal
Thu Dec 06 2012 13:33:01 GMT+0100 (Central Europe Standard Time)	AlarmDetectorMotion	100	detRestore

\* The last 64 events listed only.