

IVS - RTSP Gateway module

Table of Contents

1. Introduction, important information.....	2
2. RTSP Gateway	2
2.1. Setup RTSP Gateway	2
2.2. Add new user	3
2.3. Connect to the RTSP stream	3
2.4. Supported video formats	4
3. Further steps	4

1. Introduction, important information

In this guide, we have summarized the settings of the IVS RTSP Gateway feature. For a complete overview of the IVS system setup and configuration, please refer to the ***IVS Installation Manual*** documentation.

2. RTSP Gateway

The Intellio Video System includes an RTSP (Real-Time Streaming Protocol) server feature, which can be accessed through the Intellio Gateway service. This allows the **primary live** video stream of cameras managed by the IVS server to be forwarded directly to external systems from the server itself. As a result, there is no need to request the primary stream again from the camera or establish an additional connection, avoiding unnecessary load on the camera-server connection.

RTSP users must be added separately and are completely independent from IVS users. For each user, you can define which cameras they have access to.

This function requires the **IVS-RGW** module to be included in the product key.

Each user must have a unique **Login Name** and **Password**. RTSP user permissions are located under the user's information, in the **Add RTSP User** window at the bottom of the list. By default, **Camera Access: ALL** is enabled.

2.1. Setup RTSP Gateway

The configuration can be found in the file located at: **c:\Program Files\Intellio Video System\Intellio Server\IntellioGateway.ini**. In the same folder, there is a sample configuration file named **IntellioGateway_default.ini**. If you want to make changes, save the modified file as **IntellioGateway.ini**, then restart the **Intellio Video Gateway** service to apply the settings.

The default configuration is:

```
[Options]
Port=53560

[Servers]
Server1=localhost:53540

[RtspServer]
Port=8554
HttpPort=80
TranscodeKbps=1024
```

The Intellio Video Gateway service can be restarted as follows, or use the **Intellio Agent** program located among the icons next to the server clock:

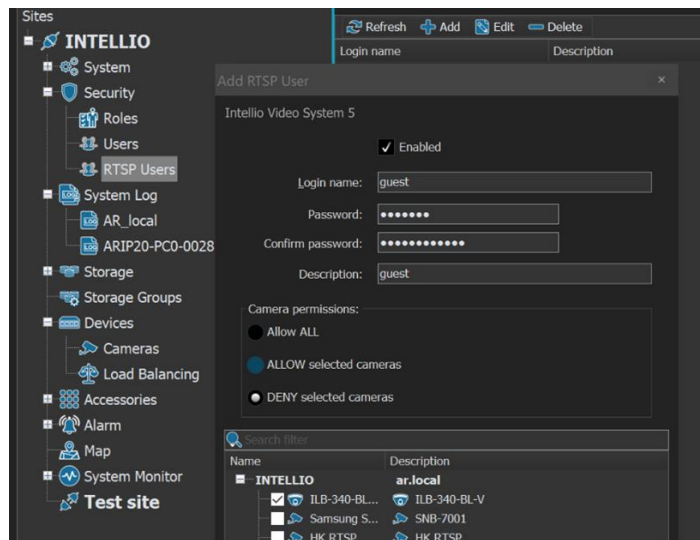
- **Start Menu / Run...**, or press **Windows + R**.
- Type **services.msc**, then click the OK button.
- Find **Intellio Video Gateway** and click **Restart**.

2.2. Add new user

To add a new RTSP user, do the following:

- Go to **System Configuration / Security / RTSP Users**.
- Click the **Add** button and fill in the user details.
- Click **OK** to save.

Here you can change the selected user's **Camera Access**, which by default is enabled for all cameras. To edit an existing RTSP user, click the **Edit** button, or to remove a user, click the **Delete** button.



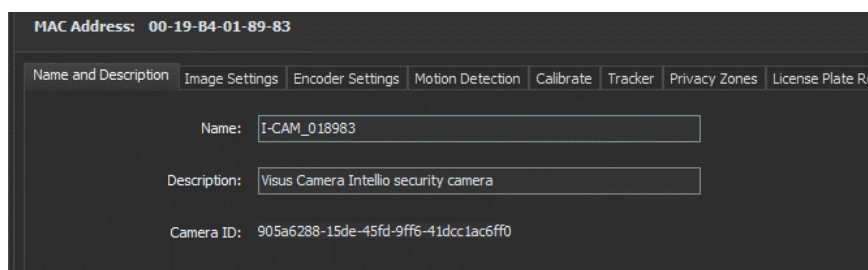
2.3. Connect to the RTSP stream

To connect, use one of the following URL formats, where **IP** is the IP address of the machine running the Intellio Gateway, and **RtspPort** is the port number set under [RtspServer] in the IntellioGateway.ini file. If using a router/NAT, this TCP port must be forwarded.

- `rtsp://IP:RtspPort/CameraID`
CameraID is the identifier of the camera, which you can find on the **System Configuration / Devices / Cameras** page (you can select it and copy it to the clipboard).
- `rtsp://IP:RtspPort/CameraName`
CameraName is the camera's name in URL encoding format. You can also find the camera name on the **System Configuration / Devices / Cameras** page. To encode URLs, use a tool such as: <https://www.urlencoder.org/>.

Some special characters cannot be encoded; in such cases, use the first URL format.

With default settings, based on the following example, the two URL addresses will be:



rtsp://localhost:8554/905a6288-15de-45fd-9ff6-41dcc1ac6ff0

rtsp://localhost:8554/I-CAM_018983

2.4. Supported video formats

The following video formats are supported for RTSP streaming:

H.264: The original stream from the camera is sent directly.

MJPEG and Intellio IVC: The Gateway transcodes the video to H.264 according to the configured bitrate (as defined by the TranscodeKbps value under [RtspServer] in the IntellioGateway.ini file).

Other video formats (e.g., MPEG-2 or MPEG-4) are currently not supported.

3. Further steps

For an overview of additional system settings, please refer to the *IVS Installation Manual* documentation.